

Keep it Cool



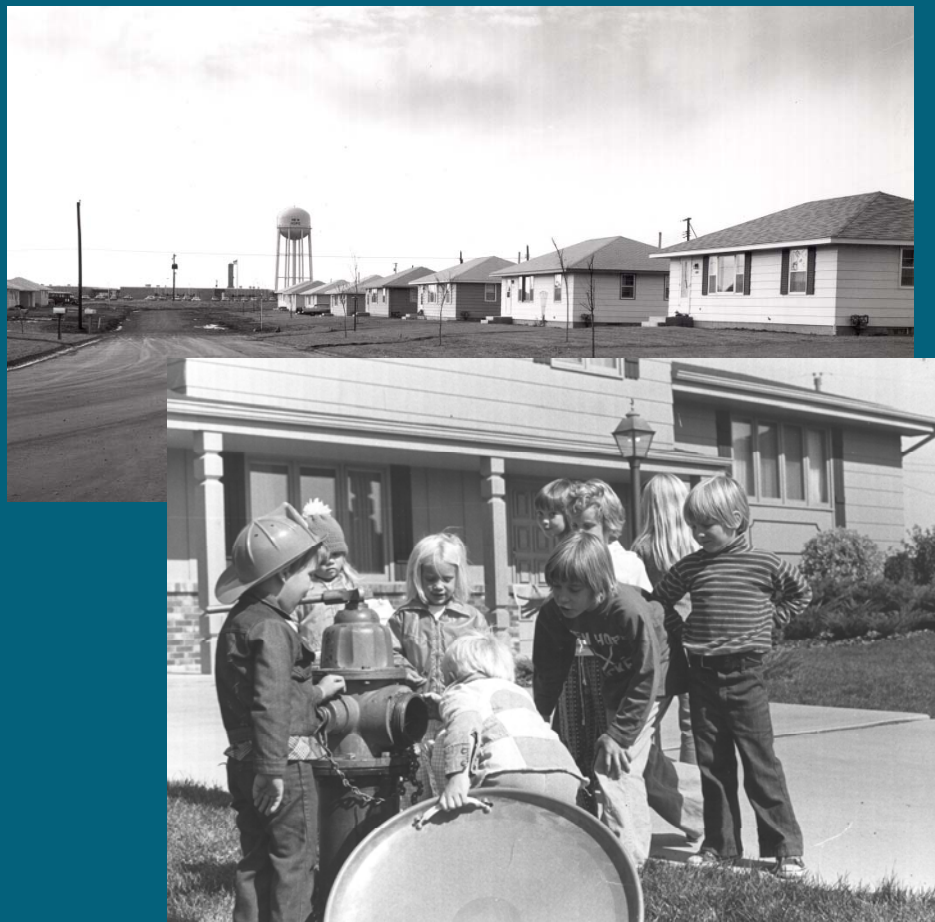
New Hope Ice Arena Endowment Fund

Welcome!

- ❑ New Hope Ice Arena
- ❑ Located at 4949 Louisiana Avenue North
- ❑ Home to ISD 281 hockey teams and area youth hockey associations

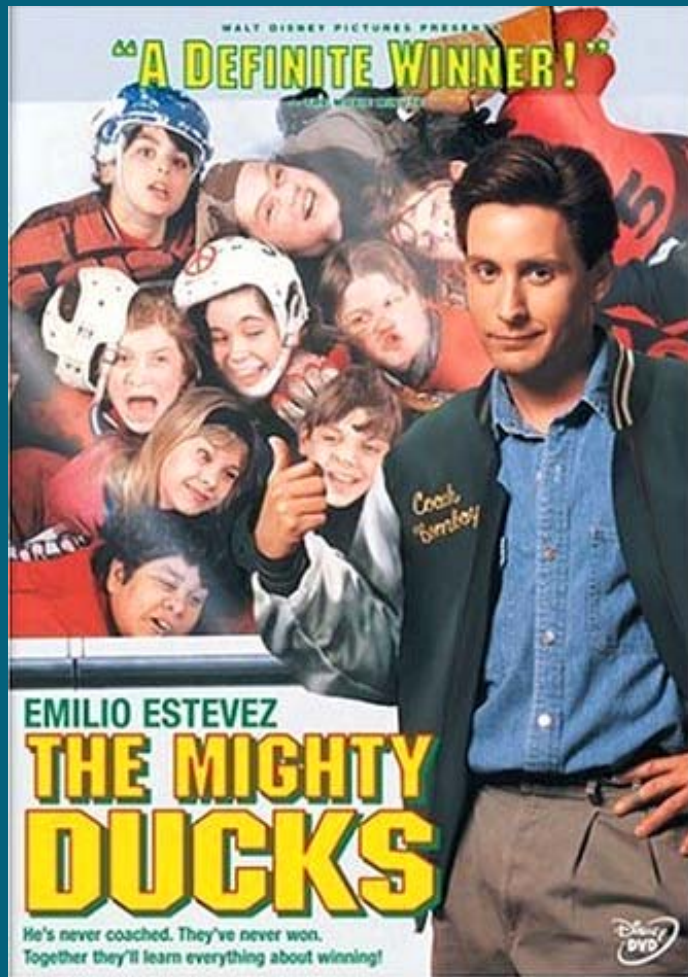


History



- For years, local hockey enthusiasts worked to convince the community of the need for a hockey facility.
- The issue was put to a vote and in July of 1974 the citizens of New Hope approved a referendum to build the arena using General Obligation bonds.
- The New Hope Ice Arena opened in the fall of 1975.

History



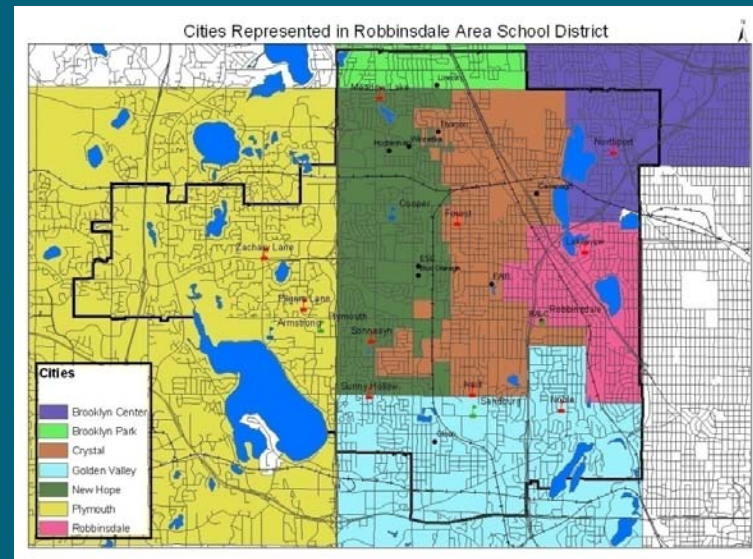
- In 1992, much of the first Mighty Ducks movie was shot at the New Hope Ice Arena.

Robbinsdale Area School District

- The facility is a regional asset which has predominantly served youth from the seven cities within the Robbinsdale Area School District.

- Service area includes:

- Brooklyn Center
- Brooklyn Park
- Crystal
- Golden Valley
- New Hope
- Plymouth
- Robbinsdale



- The city of New Hope has paid the bulk of the cost to run the facility for over 30 years.

A “Mighty” Expansion

- Through a Mighty Ducks grant and tax increment funding, a second sheet of ice was added in 1996.
- The second sheet helped to support the growing demand for ice time as a result of the addition of girls' hockey.

A “Home” to Many

- New Hope Ice Arena has been home to Robbinsdale Area School District hockey teams since 1975.
- In addition, it has also been home to the Armstrong Cooper Youth Hockey Association.



The Endowment Fund

- The fund's goal is to raise \$2.5 million.
- Its purpose is to raise funds to help pay for expected capital replacement needs at the New Hope Ice Arena.
- A community wide effort is needed as this facility serves residents of several cities.



Capital Projects

- Replacement of the north ice sheet - which was originally built in 1975 with a life expectancy of 30 years.
 - Cost is expected to be \$1.5 million.
 - City would replace the system with a more energy efficient system.
 - Replacement could occur in 2012.
- Other funds are needed for remodeling of the community room, replacement of the roof, and replacement of the dehumidification systems.

The Endowment Fund



- The Endowment Fund was established by the New Hope City Council in February of 2008.
- The city will match up to 25% of all funds received.

Platinum Level

One opportunity

\$250,000 or more

Naming rights for
entire Ice Arena for
ten years

Company logo on
new sign on 49th
Avenue and
building

Name on plaque in
lobby



Gold Level

Two opportunities

\$100,000 - \$249,999

Naming rights for one of the two sheets of ice for five years

Company emblem embedded in the ice sheet

Name on plaque in lobby



Silver Level

Two opportunities

\$50,000 – \$99,999

“Dressing” Zamboni in company logo for five years

Name on plaque in lobby



Bronze Level

One opportunity

\$10,000 - \$24,999

Naming rights for
the community
room for five years

Name on plaque in
lobby



Sponsor Level

Many opportunities

\$10,000 - \$24,999

Name on dasher board for five years

Name on plaque in lobby



Friends of the Ice Arena

Many opportunities

\$1,000 - \$9,999

Name on plaque in
arena lobby



Endowment Fund

- The donations could come in the form of one time donations or in multi-year commitments.
- Donations will be accepted as cash donations or donated products.
- Checks can be made payable to:

New Hope Ice Arena Endowment Fund
4401 Xylon Avenue North
New Hope, MN 55428

Endowment Fund

- For more information, please contact:

Shari French, Director of Parks and Recreation

763-531-5152

sfrench@ci.new-hope.mn.us

-Or-

Kirk McDonald, City Manager

763-531-5112

kmcdonald@ci.new-hope.mn.us